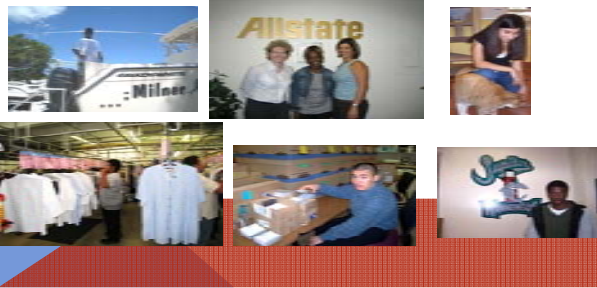


## Vocational Program

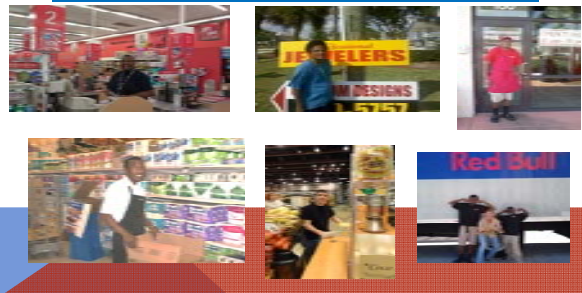
Believers Academy's Career Development Program is a two part system. Part I is called **Project Discovery**. This hands-on comprehensive curriculum provides students with the skills necessary for entrance into the workforce and independent life. Students learn hundreds of real world job skills as well as the academic skills needed to perform those tasks. Students also gain important life skills and employable skills. Students exit the program with a better understanding of the job world and potential careers that meet their interests, ability and aptitude.

Part II is **Job Placement**. Students put their employable skills to the test. They are placed in internships and paid employment within the community. Students will earn elective credits while becoming career ready. All students will be afforded the opportunity to graduate with a high school diploma and paid employment.

### INTERNSHIPS



### PAID EMPLOYMENT



## FREQUENTLY ASKED QUESTIONS

### HOW MUCH DOES IT COST?

- ◆ We are a **FREE** public charter school

### WHO CAN ATTEND BELIEVERS?

- ◆ **ESE Students age 14-21**
- ◆ **Students Struggling Academically**
- ◆ **Students desiring a Job**
- ◆ **Drop-out Prevention Students**

### WHAT MAKES BA DIFFERENT?

#### Students will graduate with:

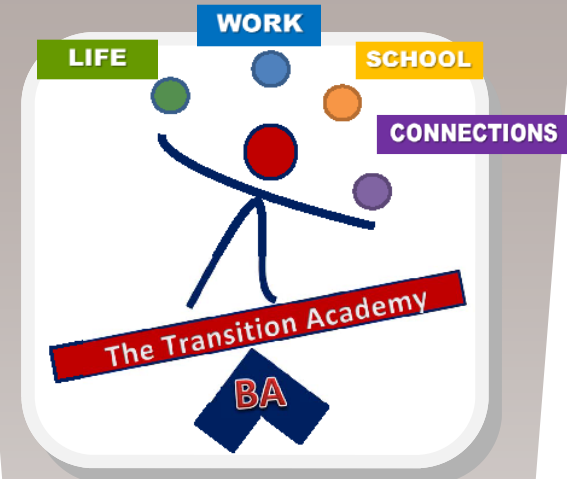
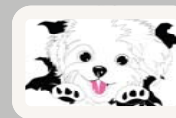
- ⇒ **Regular High School Diploma**
- ⇒ **Work Experience and/or a JOB**
- ⇒ **Independent Living Skills**
- ⇒ **Life Skills/ Resume/ Career Portfolio**

### HOW DO I ENROLL?

- **Call Believers Academy and schedule a tour**
- **If you meet criteria and there is availability, all you have to do is complete the enrollment paperwork**

### IS TRANSPORTATION PROVIDED?

- ◆ **Palm Tran, PT Connection & Tri-Rail passes are provided to our students**

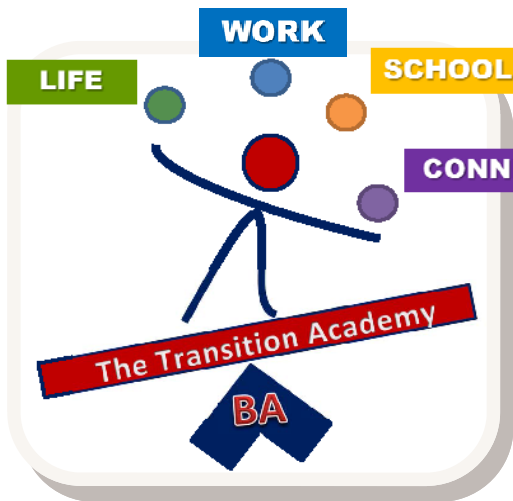


Education that  
Conquers Challenges  
&  
Unleashes Potential



5840 Corporate Way, Suite 100  
West Palm Beach, FL 33407  
Phone: 561-340-2507

[www.believersacademyinc.org](http://www.believersacademyinc.org)



Bellevue Academy recognizes that managing the responsibilities of adult life takes time, practice, and support. Starting in the 9th grade, BA will begin developing a plan for students to transition to greater independence and reach career goals. BA's Tools for Transition are broken into four domains:

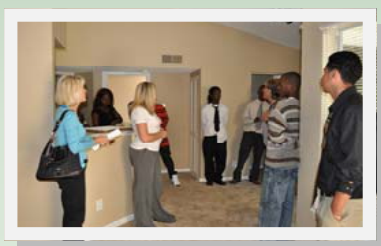
## Life, Work, School, and Connections

Our students will earn a High School Diploma while developing an awareness of how each of these elements manifest in their lives. The four elements will guide the creation of transition plans, as each student presents strengths and weaknesses in each area. As students progress through the program, they will leave high school with their **DIPLOMA**, a **JOB** and the ability to attend **TRADE SCHOOLS & COLLEGE**.



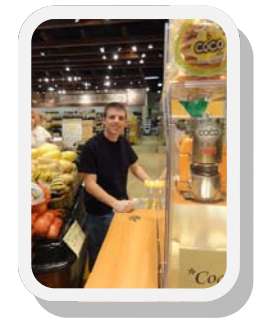
### Our Program Focus

The **Life** domain addresses the basics of managing everyday life. Household Management issues such as establishing housing, furnishings, cleaning, groceries & cooking along with Financial Management will be the core elements of this domain. We also assist our students in dealing with medical and health issues and provide support with personal hygiene, diet, and general fitness. Additionally, we assist our students in obtaining independence throughout the community by using public transportation systems or acquiring their drivers' licenses.



## Work

is a stabilizing component of life that fosters confidence and independence. We provide our students with job seeking skills, resume development, job application and interview skills training. Our staff supports them in obtaining and maintaining employment. We utilize our extensive network in Palm Beach County to increase opportunities for job placements of all our students. Every student will first complete an internship which matches his career preferences, interests, and abilities. Using the skills and references garnered from the internships, students will springboard into employment opportunities. Once employment is secured, we continue job coaching to further ensure follow through with job responsibilities while illustrating how employment serves long-term goals for increased independence. For students who come to BA with employment, we help them make career advancements within their current organizations or career changes in order to meet career goals.



## School

is the domain which is challenging for our students. BA helps to remediate reading, writing and math deficits to allow all students to obtain credits to **GRADUATE** with a **STANDARD HIGH SCHOOL DIPLOMA**. BA looks forward to introducing the students to educational opportunities after high school that can be incredibly rewarding. We offer our students the opportunity to improve upon academic deficits to meet his or her educational and life goals. Whether it is attending a trade school or taking certification courses at the local community college, we support and encourage each student to set and attain appropriate educational goals.

## Connections

is the domain which focuses on the whole person. Developing and maintaining healthy and supportive relationships is a crucial part of life. We encourage our students to engage in the community by connecting them with support and social groups, as well as community resources and activities. Learning to develop nurturing and healthy peer relationships is a prominent focus of our program. We urge our students to be introspective and realistic, while curiosity and intelligence allow them to acquire insight and wisdom to become the best that they can be. It takes a community to raise a child.

